



Traffic Assessment + Proposed Recommendations

Existing Mosaic Commercial Development Street Grid





OBJECTIVES

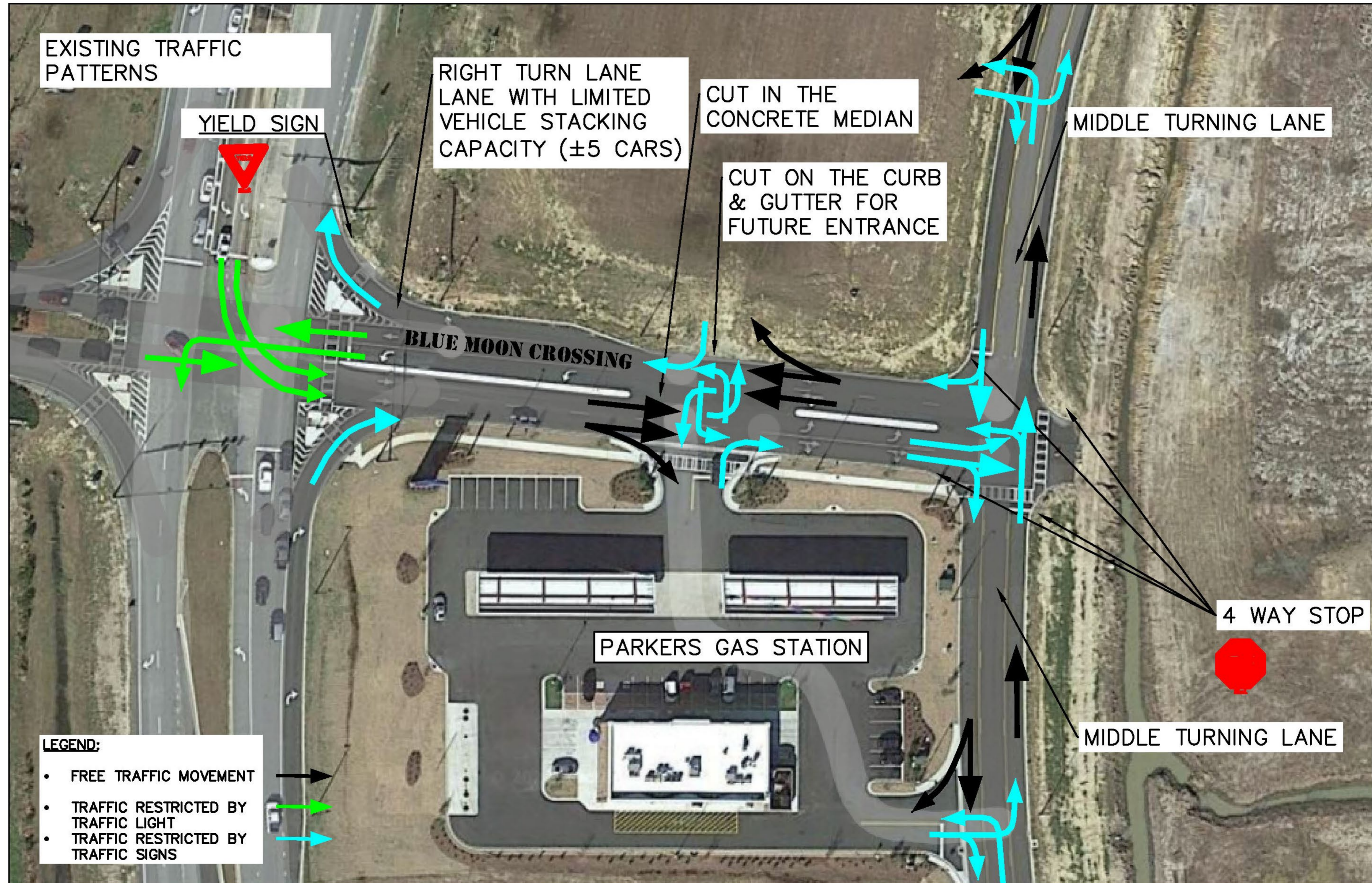
OF ASSESSMENT + PROPOSED TRAFFIC MODIFICATIONS



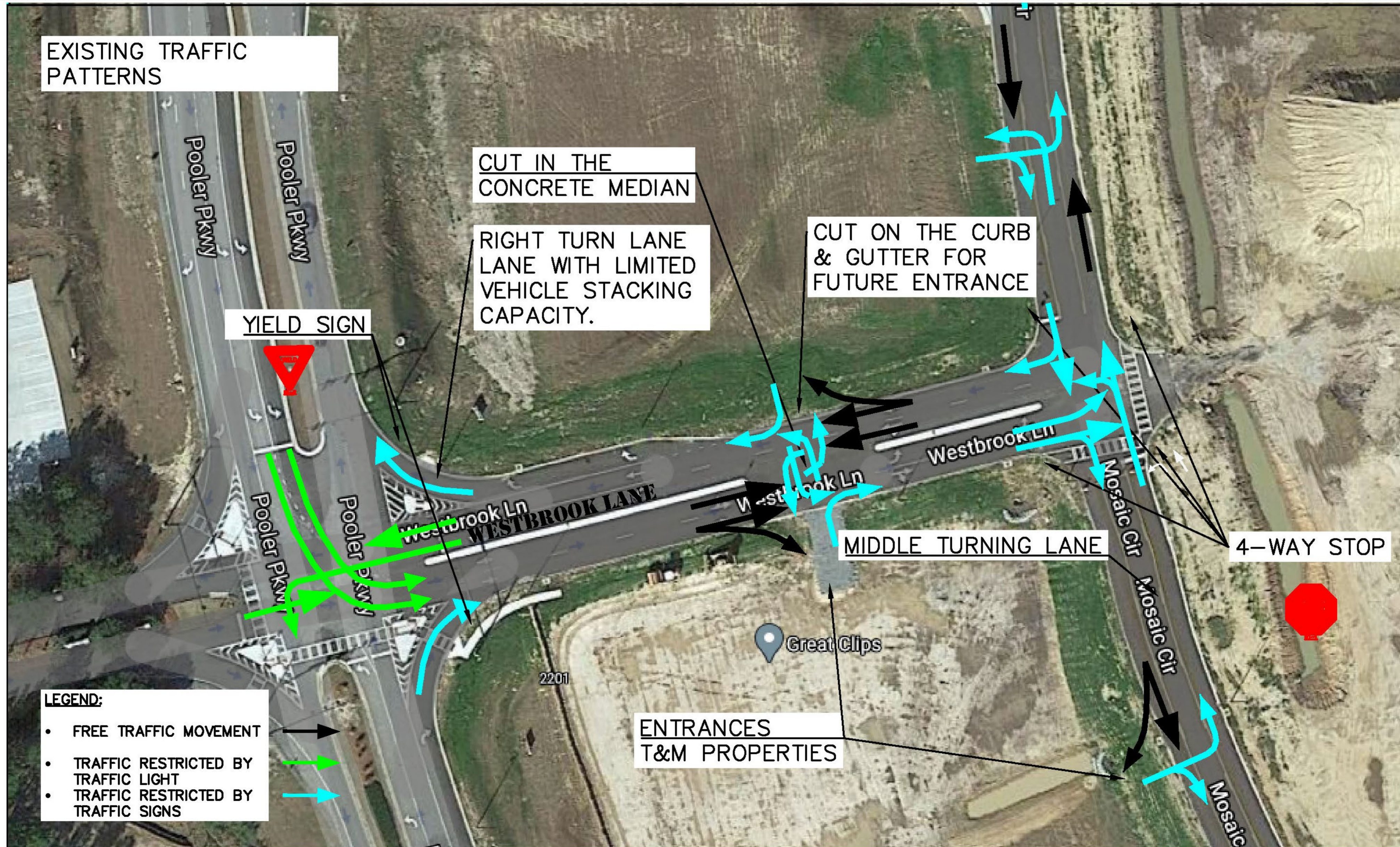
- ✔ Provide relief to the expected increase of vehicular traffic in Mosaic PUD due to the upcoming type of commercial development planned for this area.
- ✔ Reduce the impact of this development to the traffic flow at Pooler Parkway.
- ✔ Reduce the potential traffic conflicts in the existing street grid of Mosaic.

Major changes to the Pooler Parkway were not included in this assessment. Those changes will be addressed in Moffatt & Nichol traffic study currently underway.

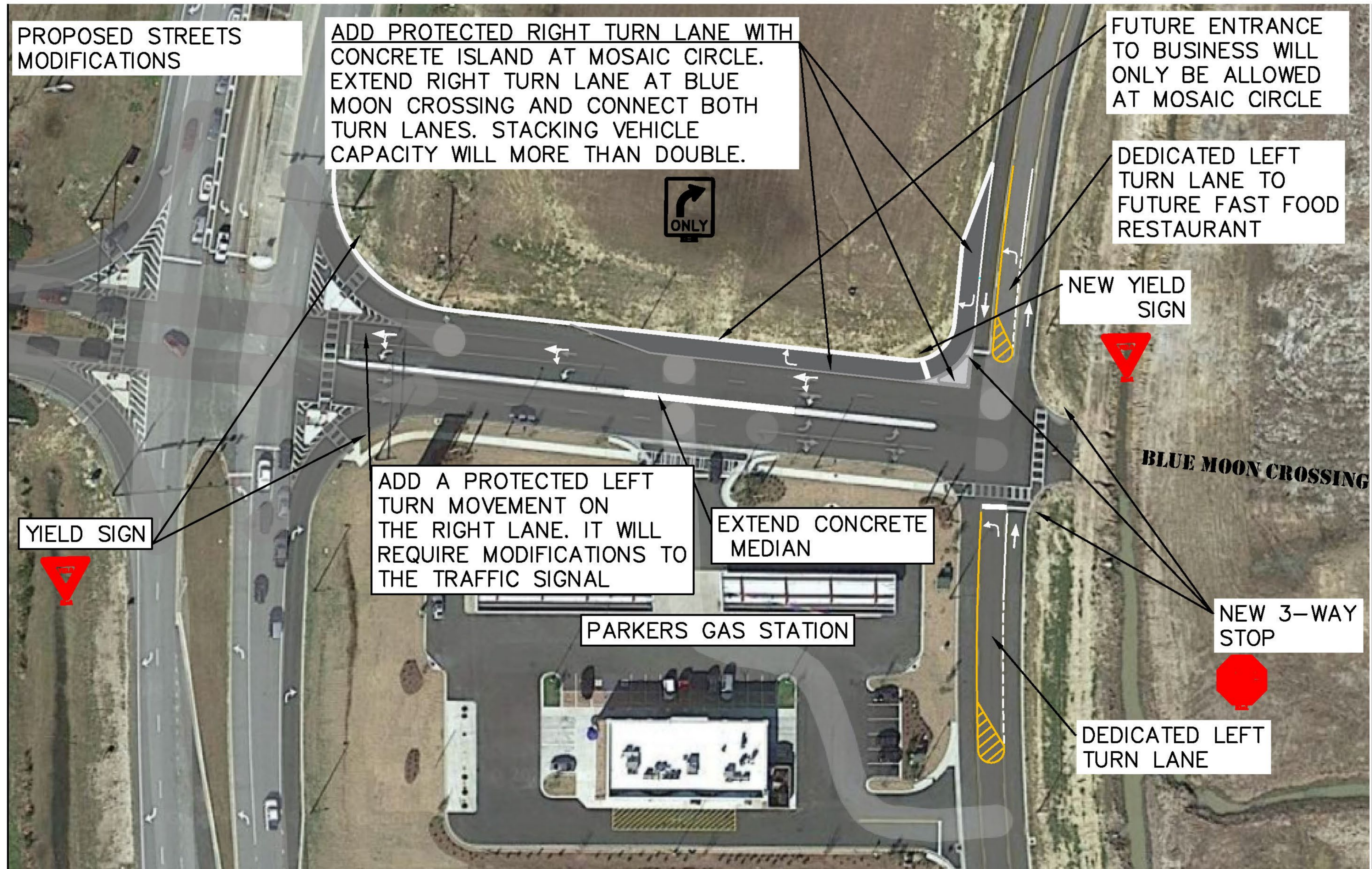
Existing Street System + Traffic Pattern (Blue Moon)



Existing Street System + Traffic Pattern (Westbrook Lane)



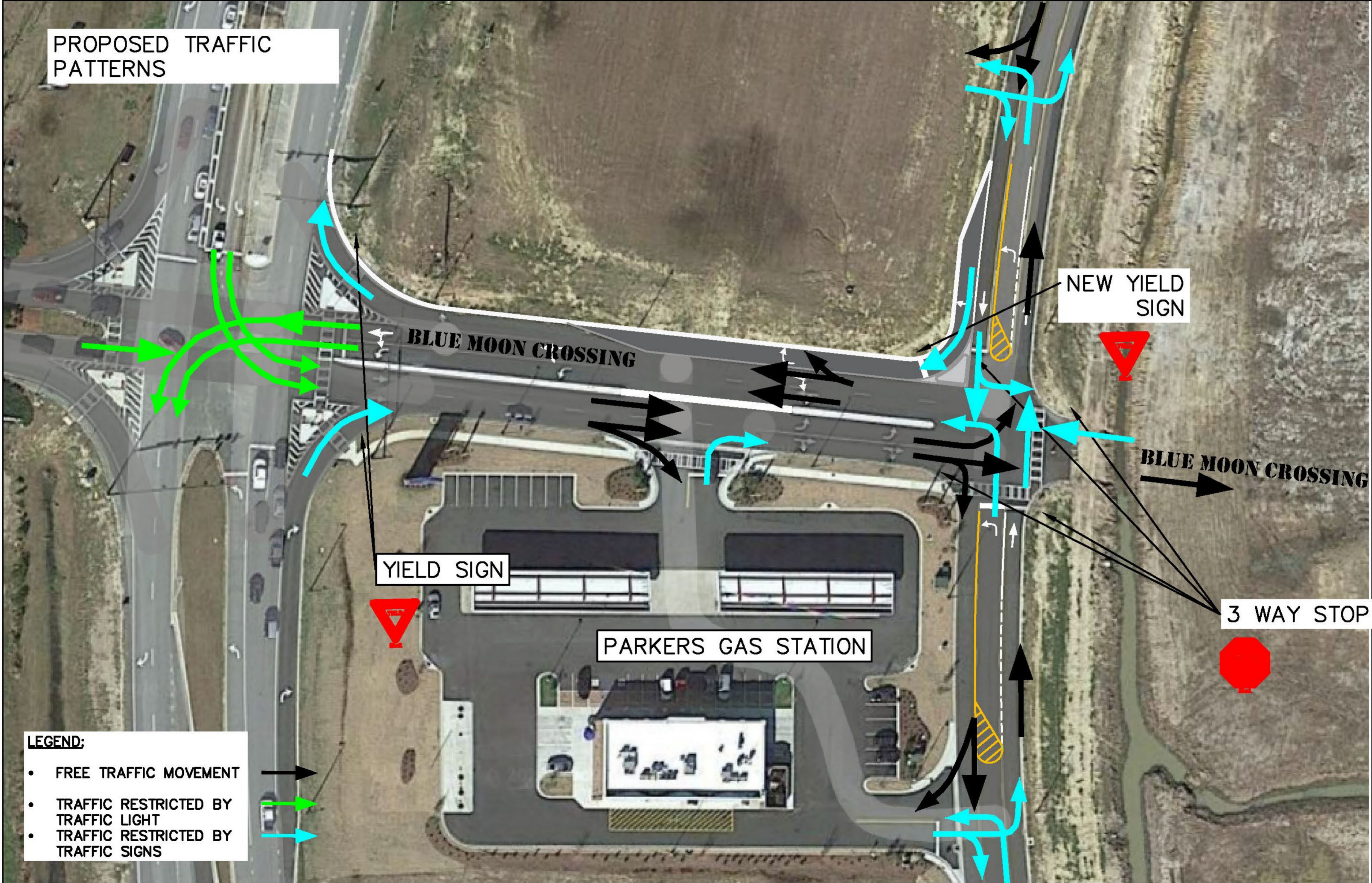
Proposed Street System Modification (Blue Moon)



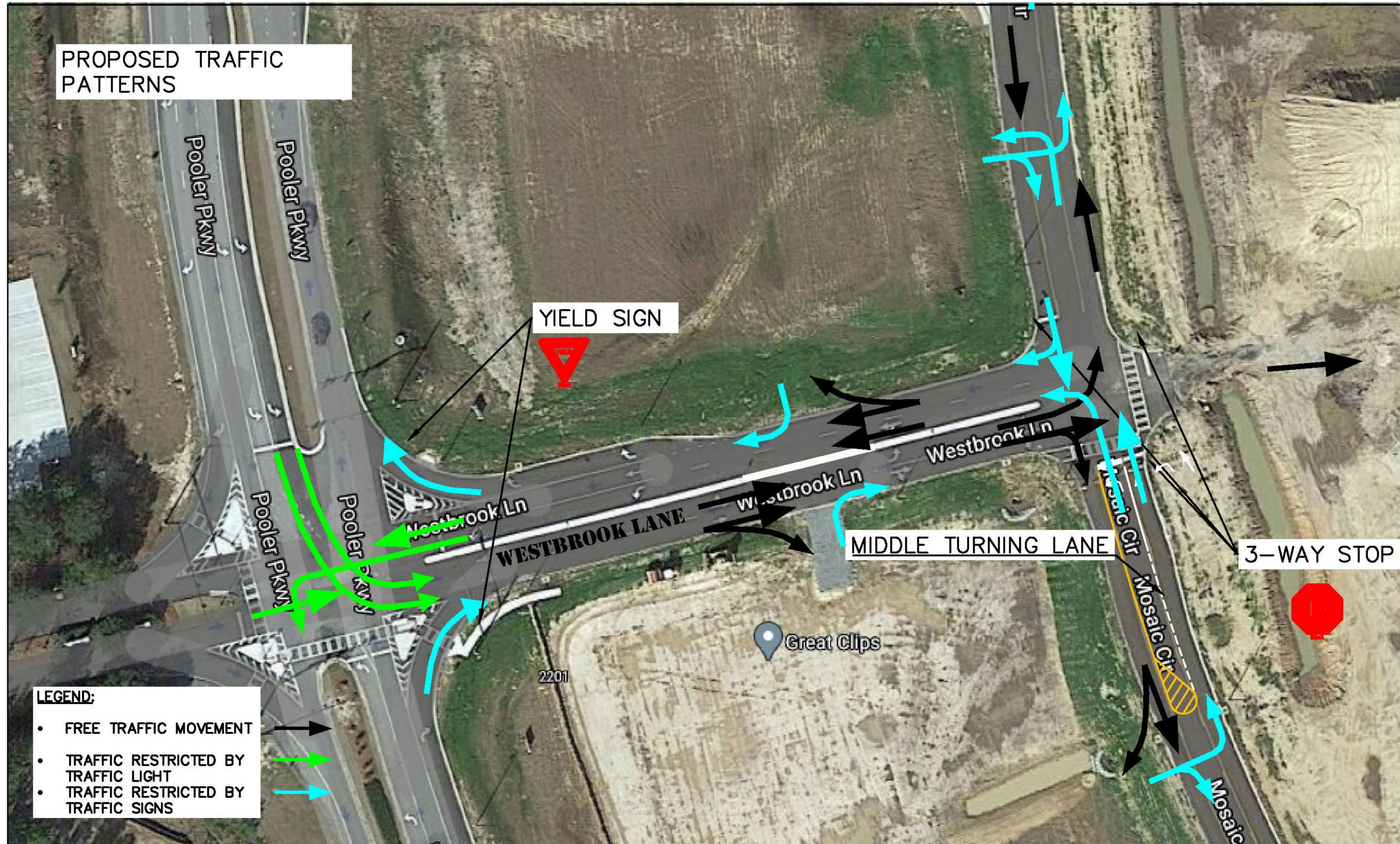
Proposed Street System Modification (Westbrook Lane)



New Traffic Patterns (Blue Moon)



New Traffic Patterns (Westbrook Lane)



EM CONCLUSION

Traffic Entering Mosaic PUD:

- Will be able to go into Costco and surrounding business lots with less obstacles which increases the capacity of the street system.
- Significant reduction of traffic overflow delays into Pooler Parkway.

Traffic Exiting Mosaic PUD:

- The additional lanes and turning movement allows traffic to increase capacity of street grid system.
- Encourages traffic movement and the ability to stack more vehicles exiting the development.

Traffic Safety

- The reduction points of conflict in the traffic patterns and additional protection of the full right turn lane at Blue Moon, will reduce the potential of accidents in the street system.

